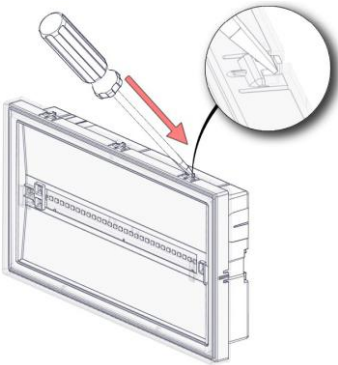
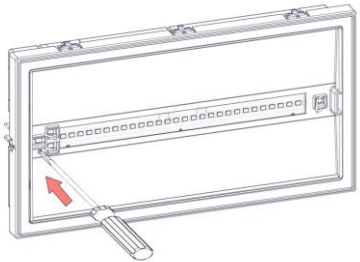


Manual Test

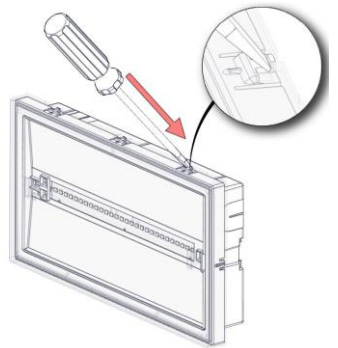


1

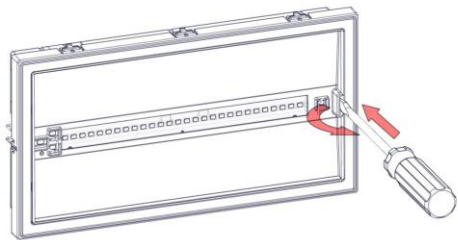


2

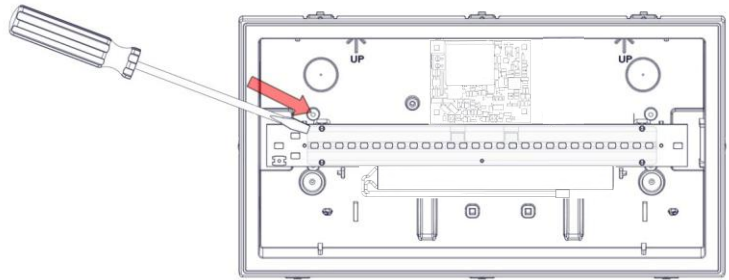
Lens Removal



1



2



3

**NOTE:** LED= Light Emitting Diode  
**LABELING EXPLANATION:**  
X: Self contained  
1: Maintained operation (\*)  
A: Including test device  
G: Internally illuminated safety sign  
180: 3 hours duration

(\*) Maintained operation: The luminaire lights its illumination source, when it is powered by the mains power supply or not.  
Non Maintained operation: The luminaire lights its illumination source, only in mains power supply's failure.

**NOTE!!** The installer should fill in, on the specification label, the letter **G** if the luminaire is used as a safety sign.

X 1 A 1 8 0  
↑  
G

**ATTENTION!!!**  
⚡ The light source contained in this luminaire shall only be replaced by the manufacturer, or his agent, or a similar qualified person.

**NOTE!!** The light source is non-user replaceable.



CAUTION : Do not view directly with bare eyes.

Technical Characteristics

OLY-500	
OPERATION VOLTAGE	220-240V AC / 50-60Hz
MAXIMUM POWER CONSUMPTION	3.4W / 3.6VA
BATTERY (Ni-Cd)	3.6V/1Ah
BATTERY PROTECTION	From overcharge and deep discharge
INDICATIONS	Battery charge indication LED, TEST button
CHARGE TIME	24 hours
MINIMUM DURATION	3 hours
LIGHT SOURCE	16 white LEDs
LUMINOUS FLUX (MAINS / EMERGENCY)	38lm / 100lm
DEGREES OF COVER PROTECTION	IP42
PRODUCED IN ACCORDANCE WITH	EN 60598-1, EN 60598-2-22, EN 55015, EN 61547, EN 61000-3-2, EN 61000-3-3
VIEWING DISTANCE (as safety sign)	25m
OPERATION TEMPERATURE RANGE	5 to 40 °C
RELATIVE HUMIDITY	Up to 95%
CONSTRUCTION MATERIAL	ABS/PC, PC
EXTERNAL DIMENSION (L x W x H)	270 x 147 x 48 mm
WEIGHT	620gr.
GUARANTEE	3 years (1 year for the battery)

LED Characteristics

OLY-500	
MANUFACTURER	Olympia Electronics S.A.
MODEL NUMBER	2102205
VOLTAGE RANGE	2.9-3.6V DC
NOMINAL POWER	780mW
CONNECTIONS	Non reversible connection between main pcb and led module
TEMPERATURE (tc)	40 °C max. across the board

Warranty

Olympia Electronics guarantees the quality, condition and operation of the goods. The period of warranty is specified in the official catalogue of Olympia Electronics and also in the technical leaflet, which accompanies each product. This warranty ceases to exist if the buyer does not follow the technical instructions included in official documents given by Olympia Electronics or if the buyer modifies the goods provided or has any repairs or re-setting done by a third party, unless Olympia Electronics has fully agreed to them in writing. Products that have been damaged can be returned to the premises of our company for repair or replacement, as long as the warranty period is valid. Olympia Electronics reserves the right to repair or to replace the returned goods and to or not charge the buyer depending on the reason of defection. Olympia Electronics reserves the right to charge or not the buyer the transportation cost.



72nd km. O.N.R. Thessaloniki-Katerini  
P.C. 60300 P.O. Box 06 Eginio Pierias Greece  
[www.olympia-electronics.gr](http://www.olympia-electronics.gr)  
[info@olympia-electronics.gr](mailto:info@olympia-electronics.gr)



OLY-500

MAINTAINED/NON MAINTAINED

EMERGENCY LUMINAIRE

IP42

M  
Maintained

NM  
Non maintained

25m

Duration  
3h

Light output  
100lm

Thank you for your trust in our products  
Olympia Electronics - European manufacturer

Package Contents

- 1 Luminaire
- 1 Set of Pictograms
- 1 Mounting accessories
- 1 Manual

General

These luminaires are used indoors (ta 40°C) where emergency light is needed. Each luminaire must be permanently connected to mains power supply. In normal operation the led strip lights and the battery is charging. In case of a mains power supply failure the luminaire will light the led strip automatically in emergency mode. When the mains power supply is restored the device turns to normal operation.

Manual Operational Test

Remove the diffuser and then by pressing the test button briefly an operation test is initiated. The light source and the emergency circuit of the device are tested. The manual test can be conducted only if the mains power supply and the battery are connected. During this test period the LAMP TEST LED will blink. The battery must have adequate charge. This test lasts for 3 seconds.

Lens Removal

When the luminaire is used without the pictograms or the SP-1100 and you require more light output then remove the lens that covers the LEDs.

ATTENTION!!!

- 1. Operations for installation, maintainance or testing must be done by authorized personnel only.
- 2. Always use in any case round mains cable, with a diameter of 5-10mm (H05RN-F type 2x1mm² or any other type, at least equal to it's mechanical and electrical properties). ATTENTION!! The cable

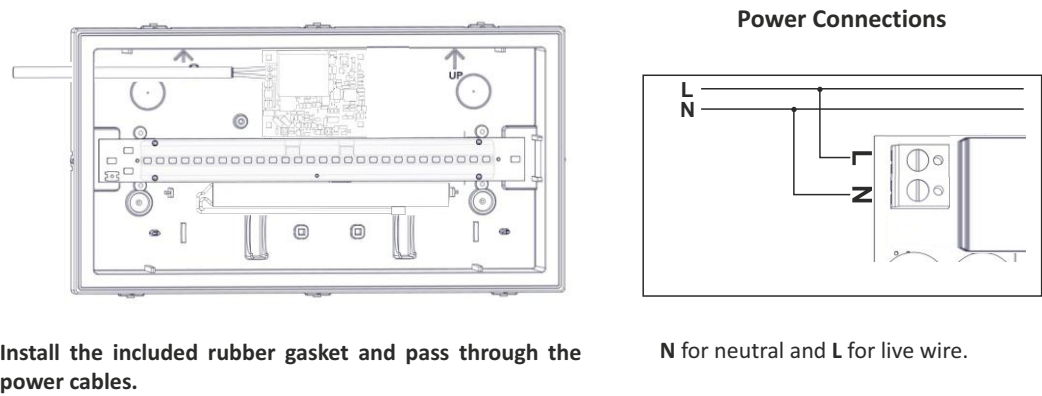
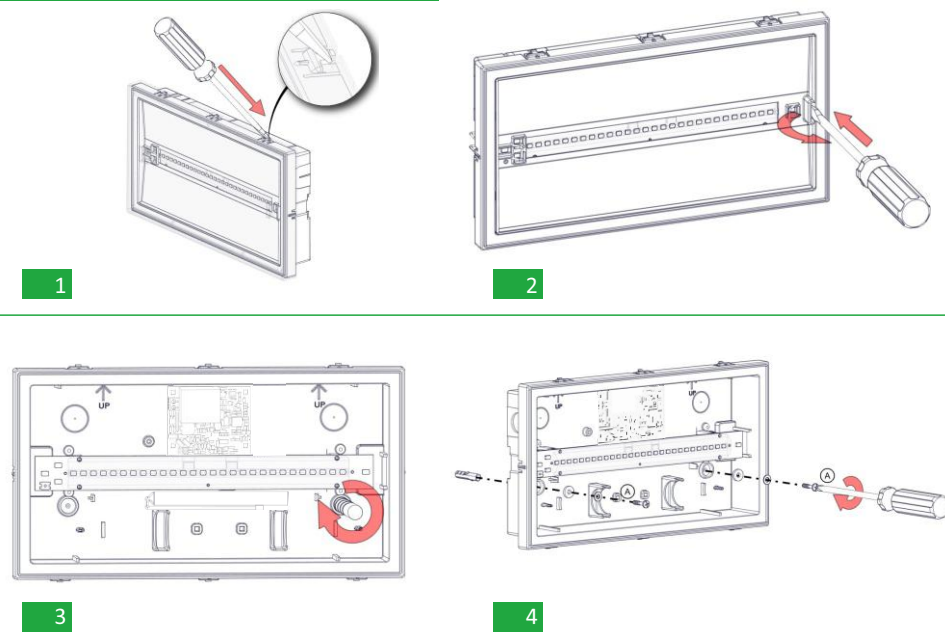
Indications LED Status

CHARGE (green)	Description
●	Charging
○	Emergency mode or battery disconnected

Note:

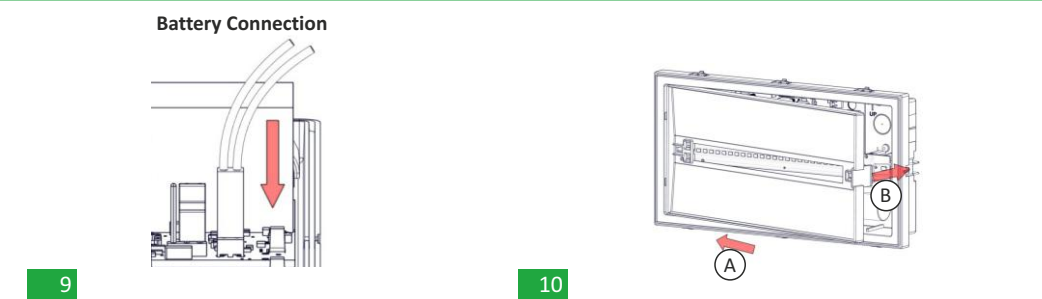
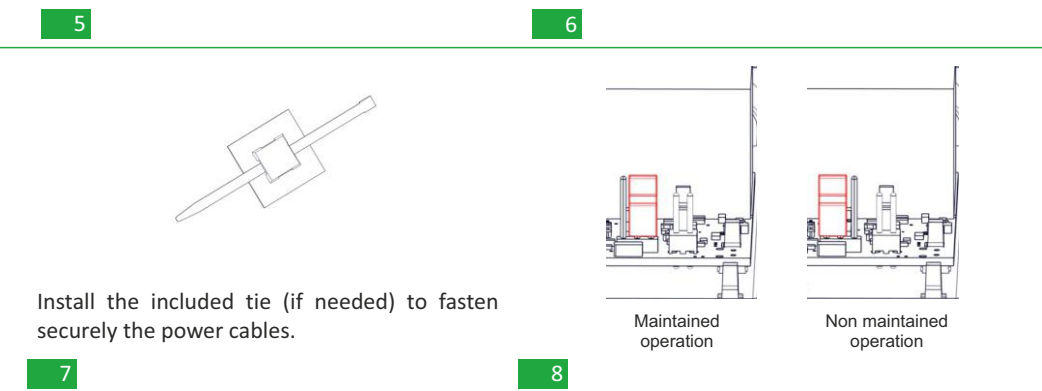
●	Permanently ON
○	Off

Installation Instructions

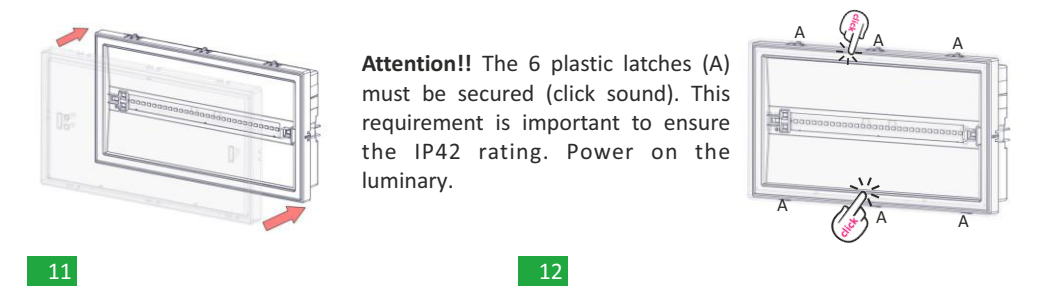


Install the included rubber gasket and pass through the power cables.

N for neutral and L for live wire.



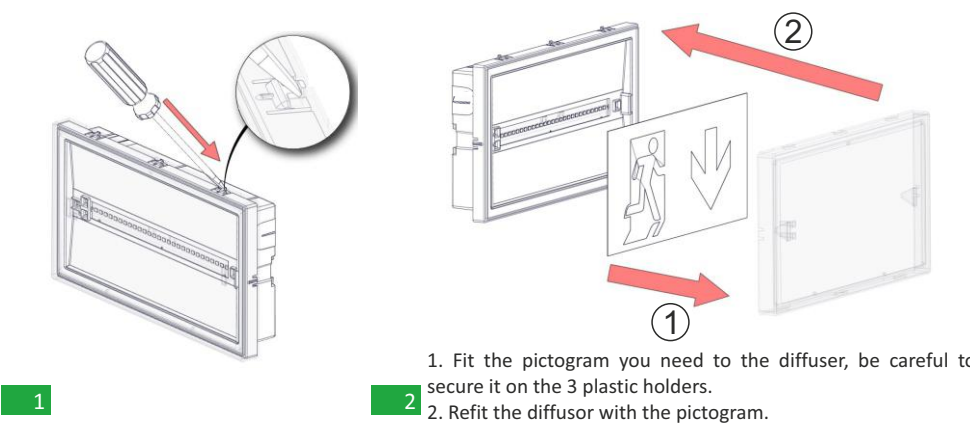
This unit has replaceable batteries that can be replaced or changed by the manufacturer or a competent person.



Commissioning

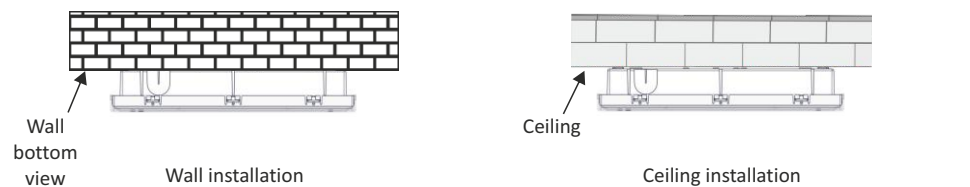
- After installation, a 24 hours charging cycle must be completed, in order to achieve the nominal autonomy.
- During commissioning of the luminaire write the commissioning date on the battery.
- When power is applied to the unit inspect that the CHARGE indicator is steady, and that the led lamp is lit (maintained operation) or OFF (non-maintained operation)
- A full duration test should be conducted after 24 hours of continuous charging. The test is initiated by isolating the mains power supply. Verify that the LED lamp is lit during the test period for at least the stated duration.

Pictogram Installation



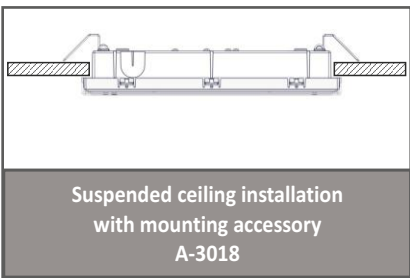
Mounting Methods

Oly luminaires can be surface mounted on walls or ceilings. For these mounted installations, special accessories are included.



Suspended installation with A-3018 accessory

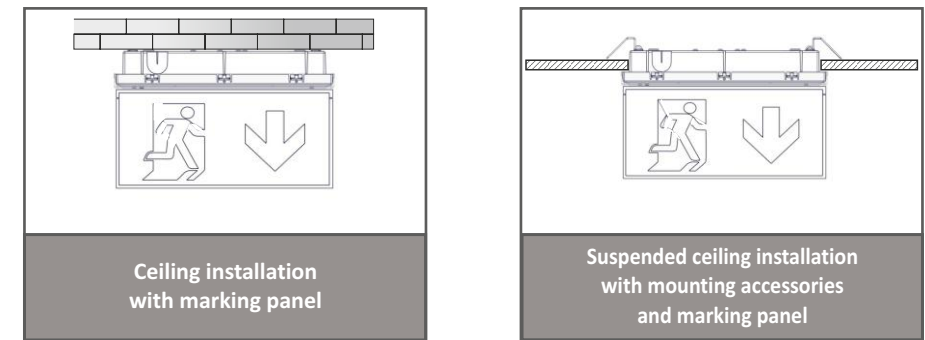
The luminaire can be installed in a suspended ceiling.



Extra Mounting Methods \*

\* ATTENTION!!! The below mounting methods can be done after request of the necessary mounting accessories!!

A marking panel (SP-1100) can be installed on the luminaire pointing the desired direction.



Battery Replacement

It can be done only by a competent person and after the mains interruption.

- 1. Follow step 1 of the installation instructions and remove the diffuser.
- 2. Follow step 2 of the installation instructions and remove the reflector.
- 3. Remove the old battery and place a new one of the same type and characteristics.
- 4. Replace the removed parts (previous steps 1 and 2).