

RF-52/ RFID CARD HOLDER



TECHNICAL CHARACTERISTICS

OPERATION VOLTAGE	Powered by RF-54/
DEGREES OF COVER PROTECTION	IP65
PRODUCED IN ACCORDANCE WITH	EN 60335-1
OPERATION TEMPERATURE RANGE	0 to 50 C
RELATIVE HUMIDITY	Up to 95%
CONSTRUCTION MATERIAL	Bayblend FR3010
EXTERNAL DIMENSIONS	110 x 70 x 30 mm
TYPICAL WEIGHT	100 gr.
GUARANTEE	2 years

Thank you for your trust in our products.
Olympia Electronics - European manufacturer.

GENERAL

The RF-52/A is a device that operates with RFID technology. It reads the RFID cards and cooperates with the RF-54/A device. The system RF-52/A with RF-54/A is used to control an electromagnetic door lock and room lighting or A/C in hotels or rent rooms. The RF-52/A is powered by the RF-54/A device and communicates with it to transfer the code of each RFID card that it reads. The cards are supplied by request, printed with the customer's logo (RF-50/T) or plain (RF-50). The RF-52/A has an orange LED to indicate the existence of an RFID card. It is off when a card is in the slot. The device has also two indication LED's (green and red), and a buzzer.

The LED's states are:

GREEN:

: The card is appropriate (accompanied by sound signal).

RED (External Card Switch):

: There is a tenant in the room.

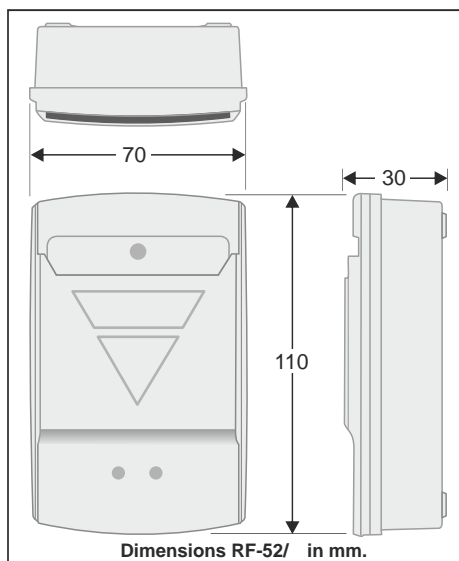
BLINKS: The card is recognised, but is not registered in RF-54/A's memory.

To maintain the cover protection 65, the installer must place the included waterproof gasket in the front plastic cover, an o-ring in each screw, and the grommet to pass through the cable for

RF-54/A. Also the diameter of this cable must be 6mm.

INSTALLATION

The device's installation is done externally on a wall or recess mounted with recess base (A-42) as shown on page 2. The connection with the RF-54/A is shown on the installation manual of the RF-54/A.



The device is pre-configured to use as external card holder.
To mount the RF-52/A as internal card holder, it should be removed the plastic cover (figure 1) and removed carefully the two jumpers that the arrows shown, on the figure below.
Refit the plastic front and the device is ready to operate.

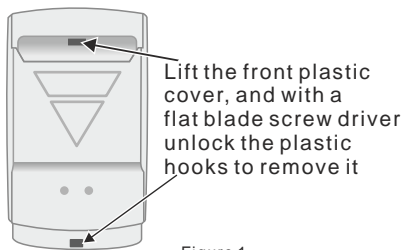
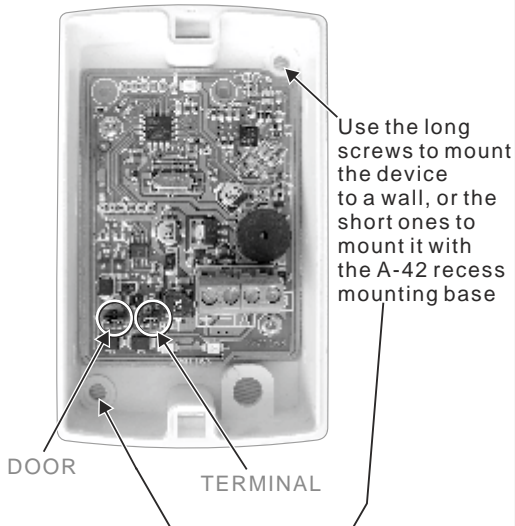
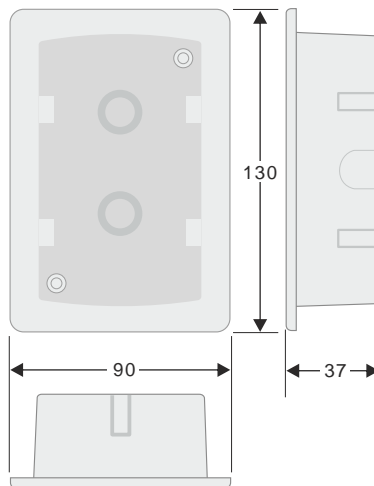


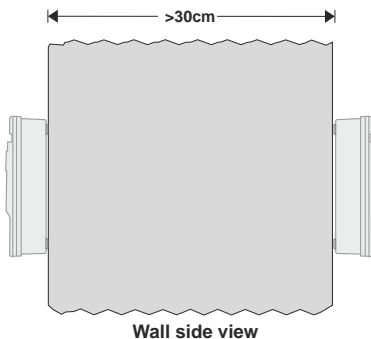
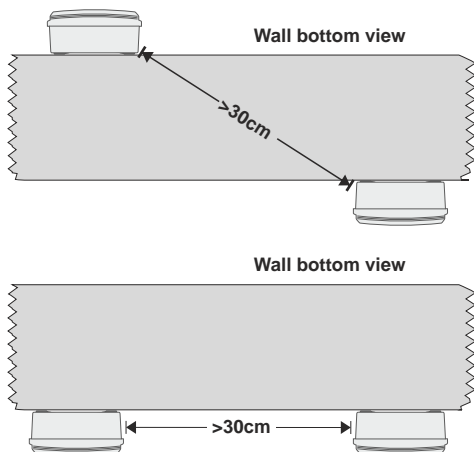
Figure 1



Dimensions -42 in mm.

ATTENTION!!!

The RF-52/ operates with radio frequencies, so a distance >30cm between 2 devices is required in horizontal or vertical axis.



WARRANTY

Olympia Electronics guarantees the quality, condition and operation of the goods. The period of warranty is specified in the official catalogue of Olympia Electronics and also in the technical leaflet, which accompanies each product. This warranty ceases to exist if the buyer does not follow the technical instructions included in official documents given by Olympia Electronics or if the buyer modifies the goods provided or has any repairs or re-setting done by a third party, unless Olympia Electronics has fully agreed to them in writing. Products that have been damaged can be returned to the premises of our company for repair or replacement, as long as the warranty period is valid. Olympia Electronics reserves the right to repair or to replace the returned goods and to or not charge the buyer depending on the reason of defection. Olympia Electronics reserves the right to charge or not the buyer the transportation cost.

HEAD OFFICE

72nd km. O.N.R. Thessaloniki-Katerini
P.C. 60300 P.O. Box 06 Eginio Pierias Greece
www.olympia-electronics.gr
info@olympia-electronics.gr