

FLAMEPROOF

CP../EFDCN.. Series - Copper-free aluminium

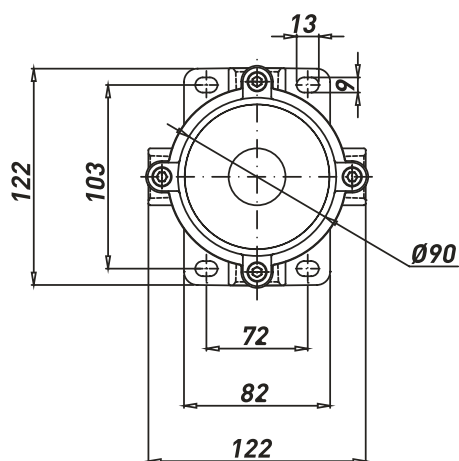


- CP../EFDCN.. Series is suitable for indoor and outdoor application and are used as push-button stations, switches, motor control stations...;
- The enclosures are made of copper-free aluminium and complete with threaded hubs suitable for cable glands or conduit, connection does not affect the internal void, which remains available for terminals wiring;
- The enclosures offer an Ex d IIC mode of protection and can be equipped with different components (up to 4) such as: push buttons, selector switches, potentiometers, signal lamps, rotary handles, ammeters, voltmeters...;
- This series is tailor made according to customer specifications in terms of quantity and type of operators. Our technical department will select the most suitable solution within the limits allowed by the certificate.

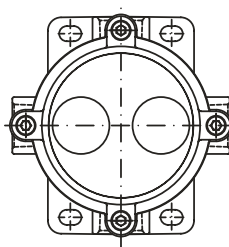
TECHNICAL FEATURES

Material	Copper-free aluminium
IP rating	IP66
Ambient temperature range	-50°C to +60°C (ATEX) -60°C to +60°C (IECEX)
Approvals	ATEX: 03ATEX0009 IECEX: BK1 15.0002 EAC: RU C-IT.BH02.B.00588/20
Marking	II 2 GD Ex d IIC T(*) Gb Ex t IIIC T(*) Db IP66 * T6/T85°C, T5/T100°C, T4/T135°C
Surface treatment	Polyurethane painting cycle - Blue RAL5014 (other colour available upon request)
Thread	Metric pitch 1.5 ANSI B1.20.1 NPT
Standard certificate label	Made by self adhesive UV and corrosion resistant polyester, approved by certified Laboratory.
Optional accessories	Internal anticondensate painting Traffolyte/Stainless steel certificate label Hot deep galvanized steel or Stainless Steel AISI316 stand/canopy.

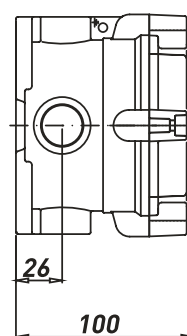
Dimensions CP../EFDCN



**CPC/CPT/CPX
EFDCN-1**



**CPC/CPT/CPX
EFDCN-2**

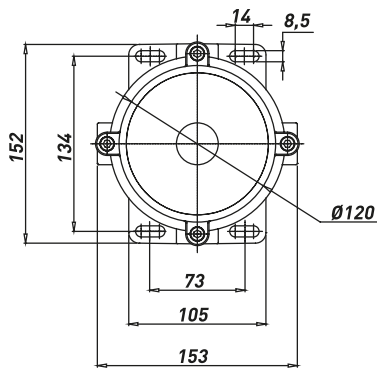


CP../EFDCN.. Series - Push button stations - Available versions

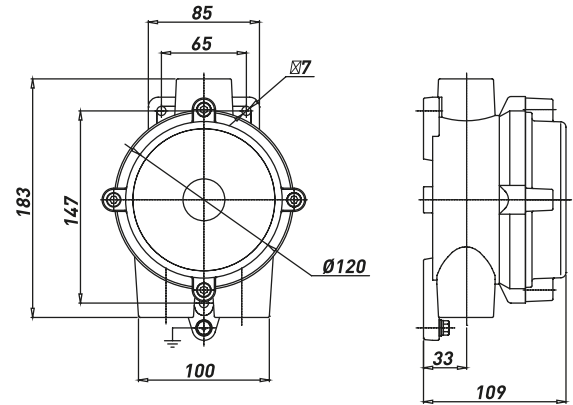
TYPE	AVAILABLE ENTRIES		CONFIGURATION OF ENTRIES	MAX. N° OF OPERATORS	ENCLOSURE DIAMETER [mm]
	METRIC	NPT			
CPC-26/EFDCN..	2 X M25	2 X 3/4"NPT		2	90
CPT-26/EFDCN..	3 X M25	3 X 3/4"NPT		2	90
CPX-26/EFDCN..	4 X M25	4 X 3/4"NPT		2	90

For complete push button stations, ask to the Sales Dept.

Dimensions CPS../EFDCN

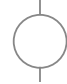





CPSC/CPST/CPSX



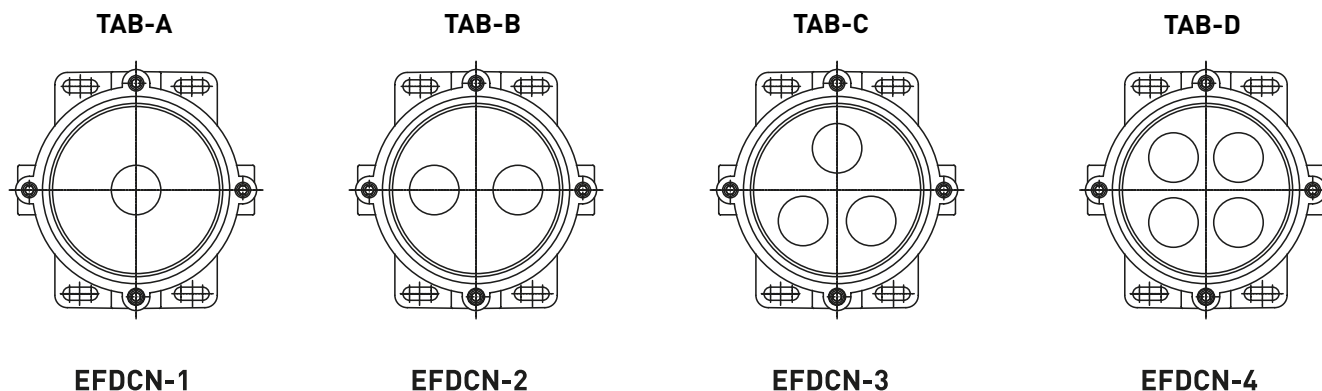
CPSG

CPS../EFDCN.. Series - Push button stations - Available versions



TYPE	AVAILABLE ENTRIES				CONFIGURATION OF ENTRIES	MAX. N° OF OPERATORS	ENCLOSURE DIAMETER [mm]
	METRIC		NPT				
CPSC-../EFDCN..	2 X M25	2 X M32	2 X 3/4"NPT	2 X 1" NPT		4	120
CPST-../EFDCN..	3 X M25	3 X M32	3 X 3/4"NPT	3 X 1" NPT		4	120
CPSG-../EFDCN..	3 X M25	3 X M32	3 X 3/4"NPT	3 X 1" NPT		4	120
CPSX-../EFDCN..	4 X M25	4 X M32	4 X 3/4"NPT	4 X 1" NPT		4	120

For complete push button stations, ask to the Sales Dept.

Dimensions CP../CPS.. EFDCN



CP../CPS.. EFDCN Series - Standard versions*

TYPE	CODE**	ENTRIES	N° OF HOLES ON COVER	DRAWING	ENCLOSURE DIAMETER [mm]	WEIGHT [Kg]
CPC-26/EFDCN-1-90	B012074010149	<div>2 X M25</div> 	1	TAB-A	90	1.10
CPC-26/EFDCN-2-90	B012074010134		2	TAB-B	90	1.10
CPSC-26/EFDCN-1-120	B012074010152		1	TAB-A	120	1.70
CPSC-26/EFDCN-2-120	B012074010154		2	TAB-B	120	1.70
CPSC-26/EFDCN-3-120	B012074010156		3	TAB-C	120	1.70
CPSC-26/EFDCN-4-120	B012074010158		4	TAB-D	120	1.70
CPC-26/EFDCN-1-90	B012074010150	<div>2 X 3/4"NPT</div> 	1	TAB-A	90	1.10
CPC-26/EFDCN-2-90	B012074010151		2	TAB-B	90	1.10
CPSC-26/EFDCN-1-120	B012074010153		1	TAB-A	120	1.70
CPSC-26/EFDCN-2-120	B012074010155		2	TAB-B	120	1.70
CPSC-26/EFDCN-3-120	B012074010157		3	TAB-C	120	1.70
CPSC-26/EFDCN-4-120	B012074010159		4	TAB-D	120	1.70

*CP../EFDCN Series are supplied ATEX/TR-CU certified. For IECEx certificate, ask to our Sales Dept.

*CP../EFDCN Series are supplied painted. Standard painting cycle: C4 - Colour: Blue RAL5014 (Other colours available upon request)

**Codes refer to drilled enclosures without operators & components. To be ordered separately, refer to "Spare & Accessories" section.

For different customized configurations, ask to our Sales. Dept.